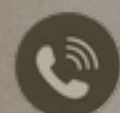




## ELUX DESIGN GROUP INC.



+1 (437) 2336171



[www.eluxdesigngroup.ca](http://www.eluxdesigngroup.ca)



[eluxdesigngroup@gmail.com](mailto:eluxdesigngroup@gmail.com)



1179 Finch Ave. west , Unit 21 & 22  
North York, ON, M3J 2G1

# About us



At ELUX, we specialize in creating outstanding kitchen environments that enhance the visionary concepts of sub-division and townhouse projects. With an unwavering dedication to innovation and functionality, our team brings 15 years of expertise to these multi-unit developments.

We recognize the delicate balance between individuality and unified design inherent in such projects, providing tailored kitchen solutions that seamlessly integrate with each property's distinctive architecture while addressing the diverse needs of homeowners. Our proven track record in sub-division and townhouse projects attests to our ability to elevate these communal living spaces, imbuing them with the warmth, practicality, and aesthetic allure that epitomize modern living.

# Timeline



- Provide detailed specifications of customer details
- Detailed objectives and the primary consideration is price
- Shop Drawings and Specifications
- CNC programming and machining
- Painting
- **AND HERE WE WILL PRODUCE AND INSTALL  
BASE OF YOUR SCHEDULE !!!!!!!**

# Why Us?

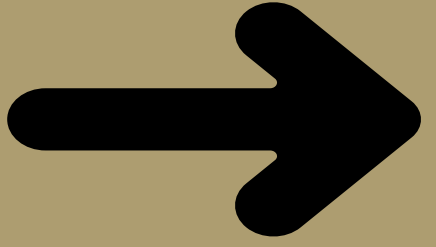
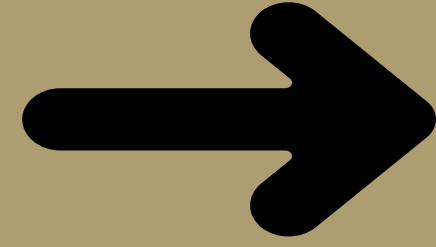
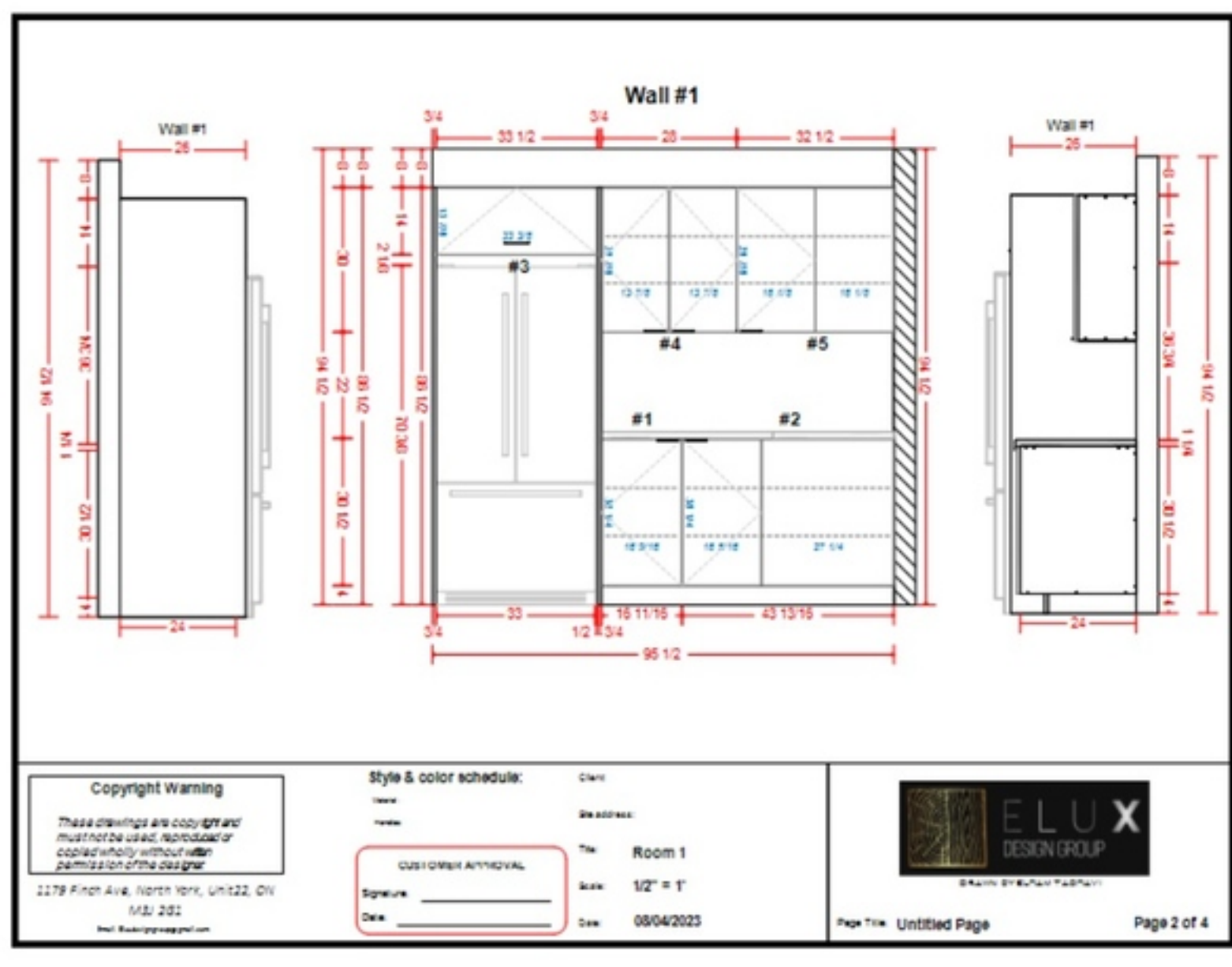
---

ELUX excels in delivering exceptional kitchen solutions through a comprehensive approach:

1. **Premium Imported Materials:** We pride ourselves on sourcing and importing the highest quality materials, ensuring durability, aesthetic appeal, and superior finishes for all projects.
2. **Expert Design Consultation:** Our skilled design consultants collaborate closely with clients to understand their needs, preferences, and lifestyle. This personalized approach results in bespoke kitchen designs that exceed expectations, maximizing sales potential and customer satisfaction.
3. **Detailed Drawings and Specifications:** Going beyond the standard, we provide comprehensive and meticulously detailed drawings and specifications for each project. These documents ensure clarity and accuracy throughout the design and installation process, aligning the final product perfectly with the envisioned concept.
4. **Unlimited Design Renders:** We offer unlimited design renders to provide clients with a clear visualization of their future kitchen. These renderings showcase various design possibilities, facilitating informed decision-making and enhancing the buying experience.
5. **Enhanced Buyer Vision:** Our commitment to detailed renders and unlimited design options empowers prospective buyers to gain a comprehensive understanding of their potential kitchen spaces. This clarity fosters a deeper connection with their future homes, contributing to increased sales opportunities.

At ELUX, these strengths constitute the foundation of our commitment to surpassing industry standards and creating unparalleled experiences for our clients.

# Our Process



# Certificates



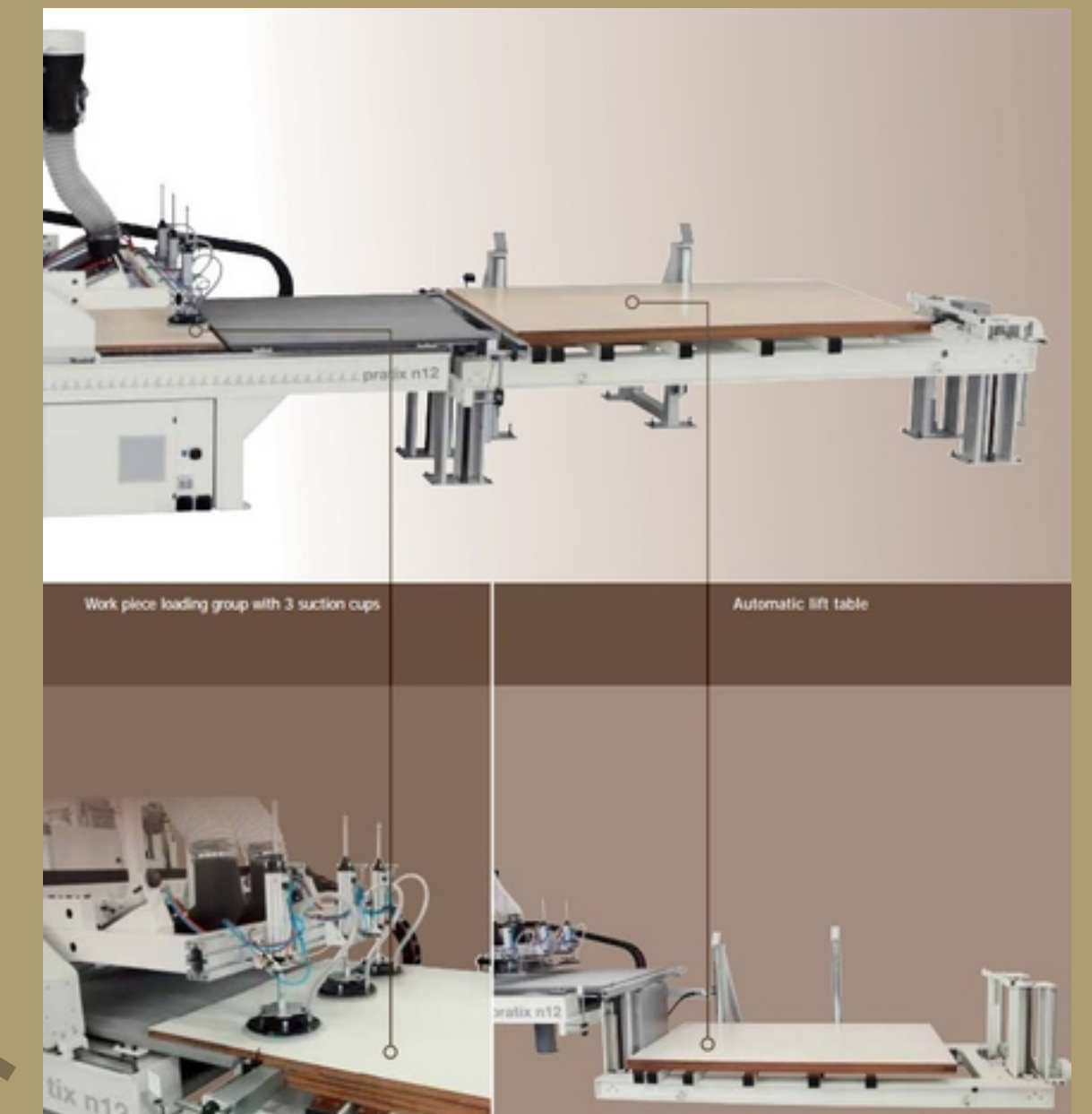
# Machinery

SCM Pratic N15



Our winning strategy involves a new generation of production techniques, detailed cutting programming, and an automated production line supervised by knowledgeable personnel. This combination ensures efficiency and excellence in our operations

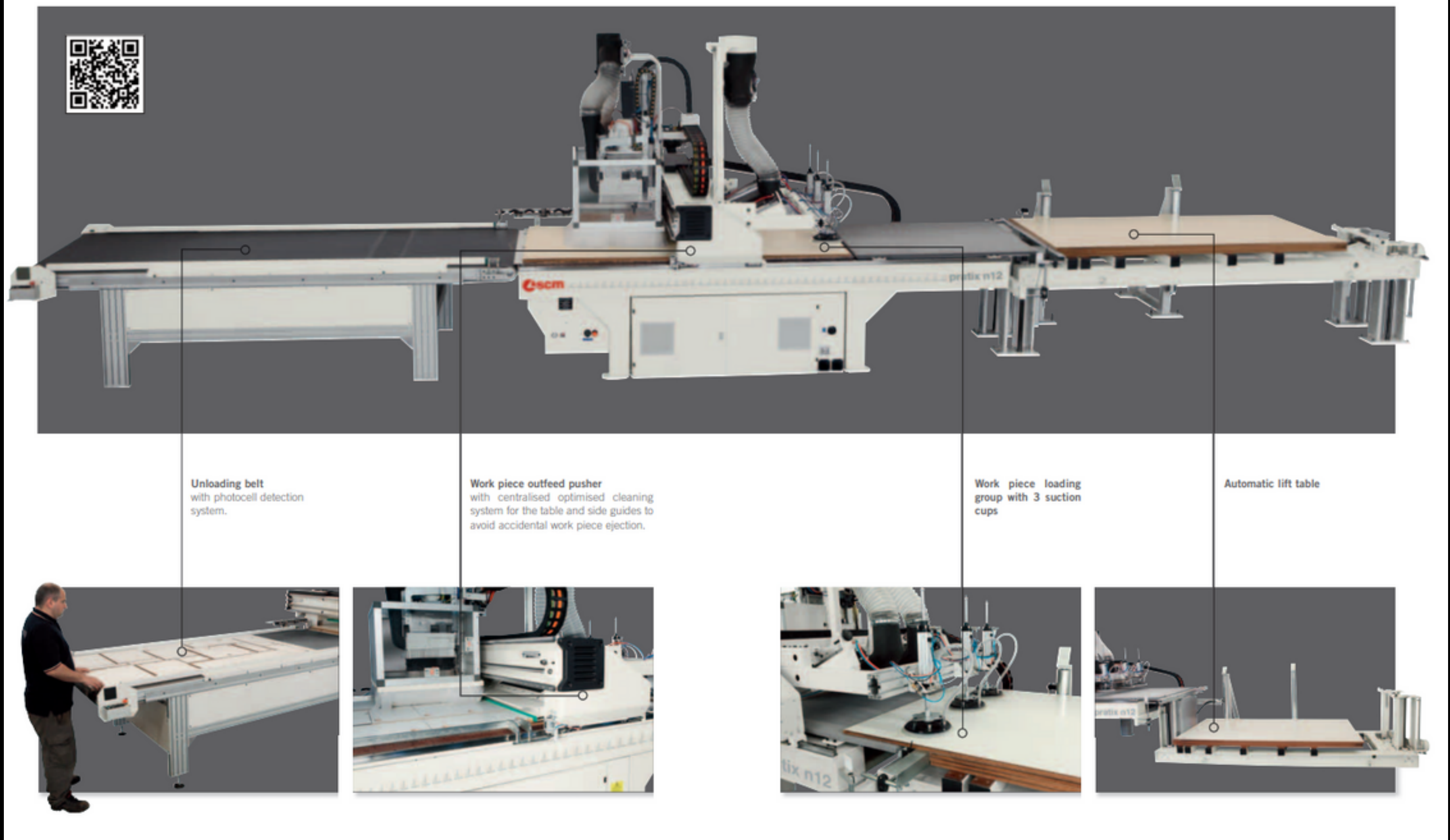
ELUX DESIGN GROUP INC.



Automatic Loading Sheet System

# CNC Machine Sections

TR10 Tool Changer:21 Total Tool Change Capacity  
Exclusively designed and upgraded in Italy for our company, this product comes in 25 head for faster process  
Phenolic table surface and 3 Pop-up Stops  
Stops  
Digital Inverter-controlled Routing Speed (1,500-24,000 RPM)  
5' X 12' with 8 vacuum zones  
Compatible with many types of design software  
Precision rack and pinion drive in X axis  
Precision ball screw drive in Y & Z axis  
Vectorial X/Y Positioning Speed 140 FPM  
Safety System with Protective Cage and Photocells for Loading/Unloading  
Rake system is available





# Edge Bander

---

Automatic single sided edgebanding machine for the application and processing of flat edge-banding material in coils (melamine, PVC, ABS, veneer) and in strips (solid wood, HPL, prepared veneers etc.)

Premilling

Anti Adhesive

Glue unit

End trim

Tilting top and bottom trimming

2 motor corner rounding with computer controlled radius change

Profile scrapper

Flat scrapper

Buffing

Hot air blower

UV lights



Biesse Artech Akron 440 Edgebander

# Paint

## 15C25 AIRMIX® PAINT PUMP

The 15C25 Airmix® pump is perfect for painting small quantities of fluid products, water or solvent based. Up to 90 bar of fluid pressure to compensate pressure drops.

### ACCELERATOR OF PERFORMANCE

- . Good chemical compatibility with GT or MB-A cartridges.
- . Large range of "ready to spray" kits
- . Suction rod or gravity hopper



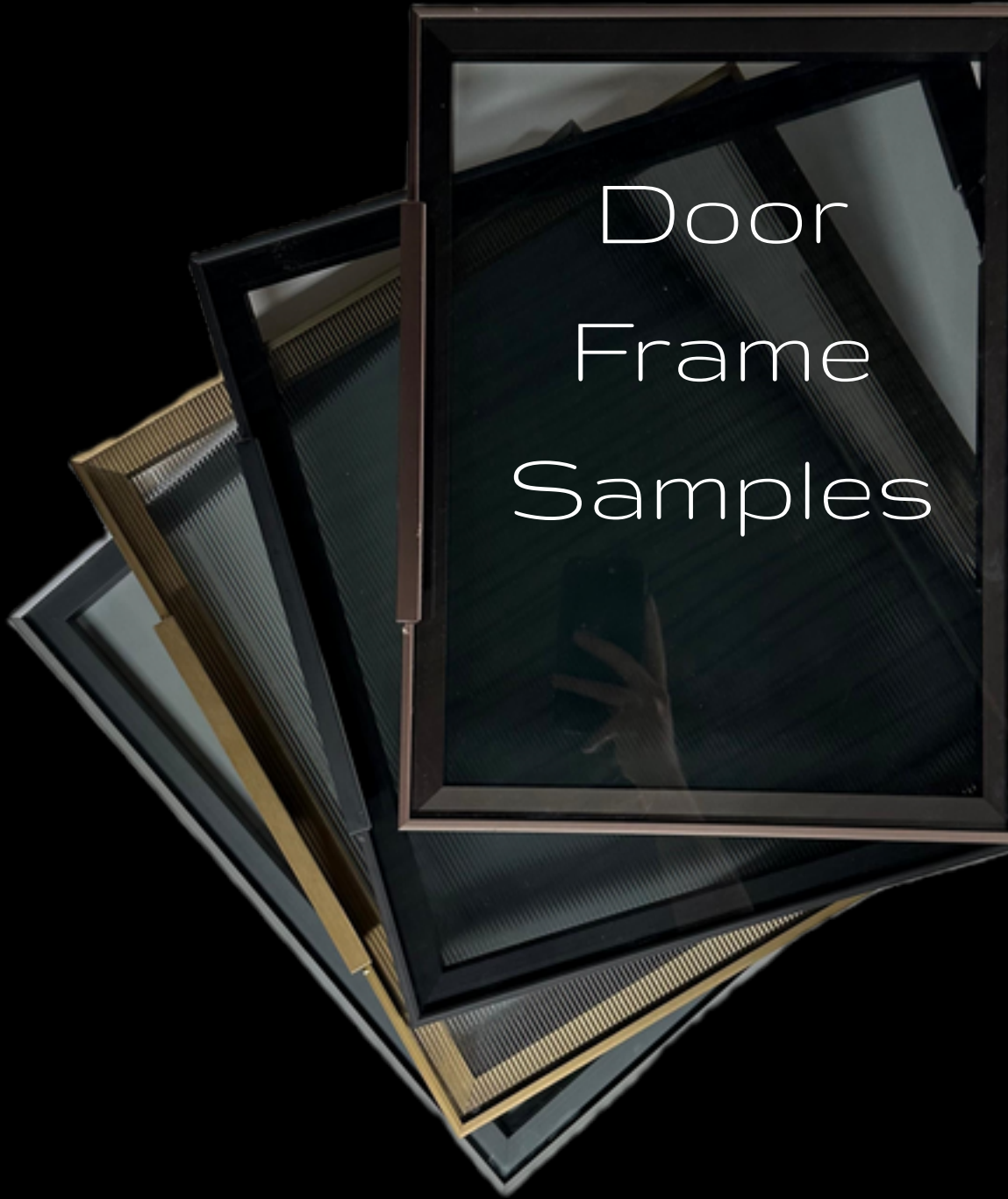
The entry-level, stand-alone solution is designed to meet flexible production requirements and can be used for solvent- and water-based paints. Venjakob says It can optionally be equipped with a belt-cleaning system and/or a paper transport belt, making it especially ideal for smaller companies to replace manual painting.

### Spray Smart features:

- . Working width: 1,300 mm
- . Working height: 920–960 mm
- . Feed speed: 2–4 m/min.
- . Exhaust air volume

Venjakob Ven Spray Smart

# Hinge Maker



Door  
Frame  
Samples

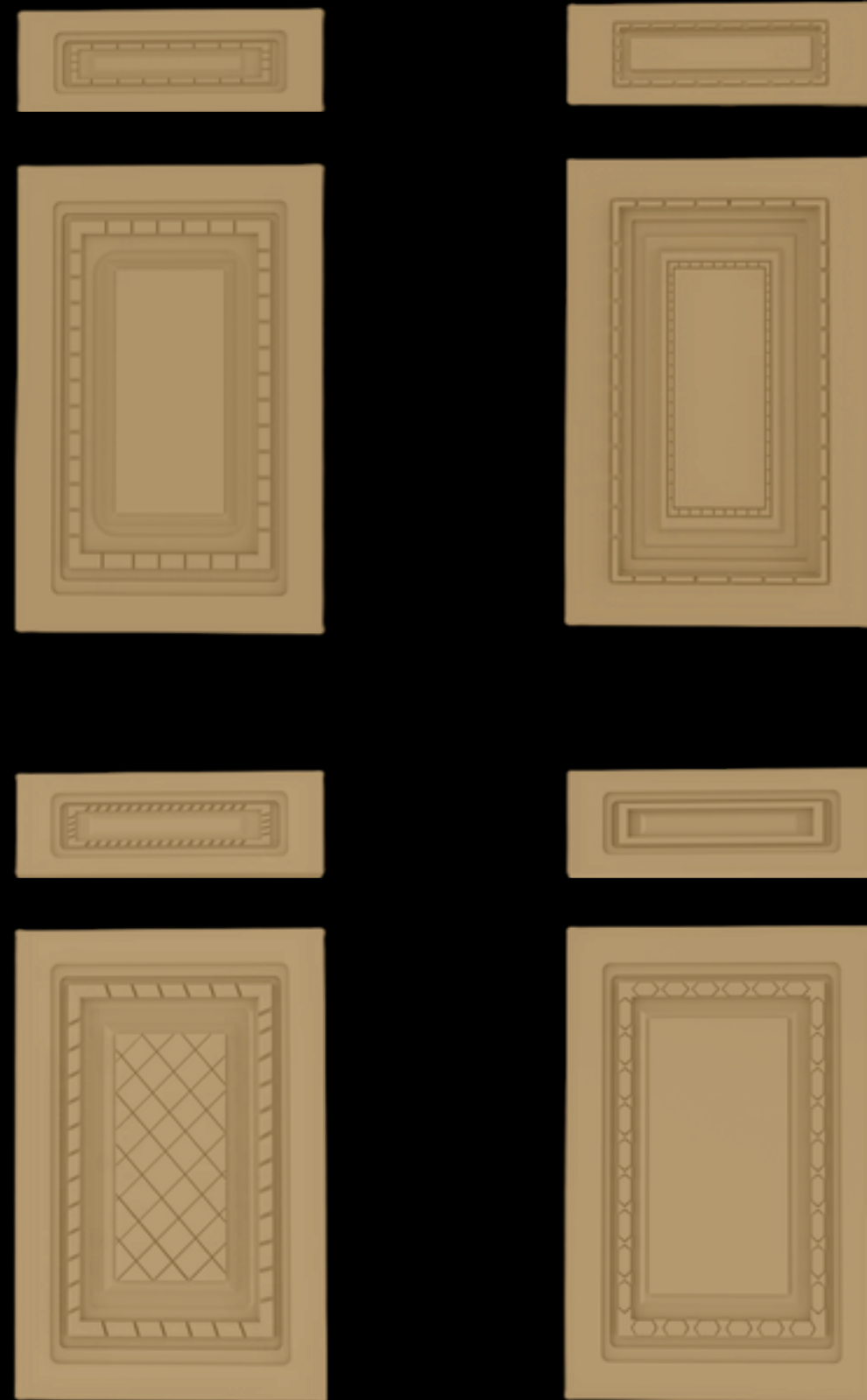


Aluminum Frame Cabinet Door  
and  
Hinge Maker Machine

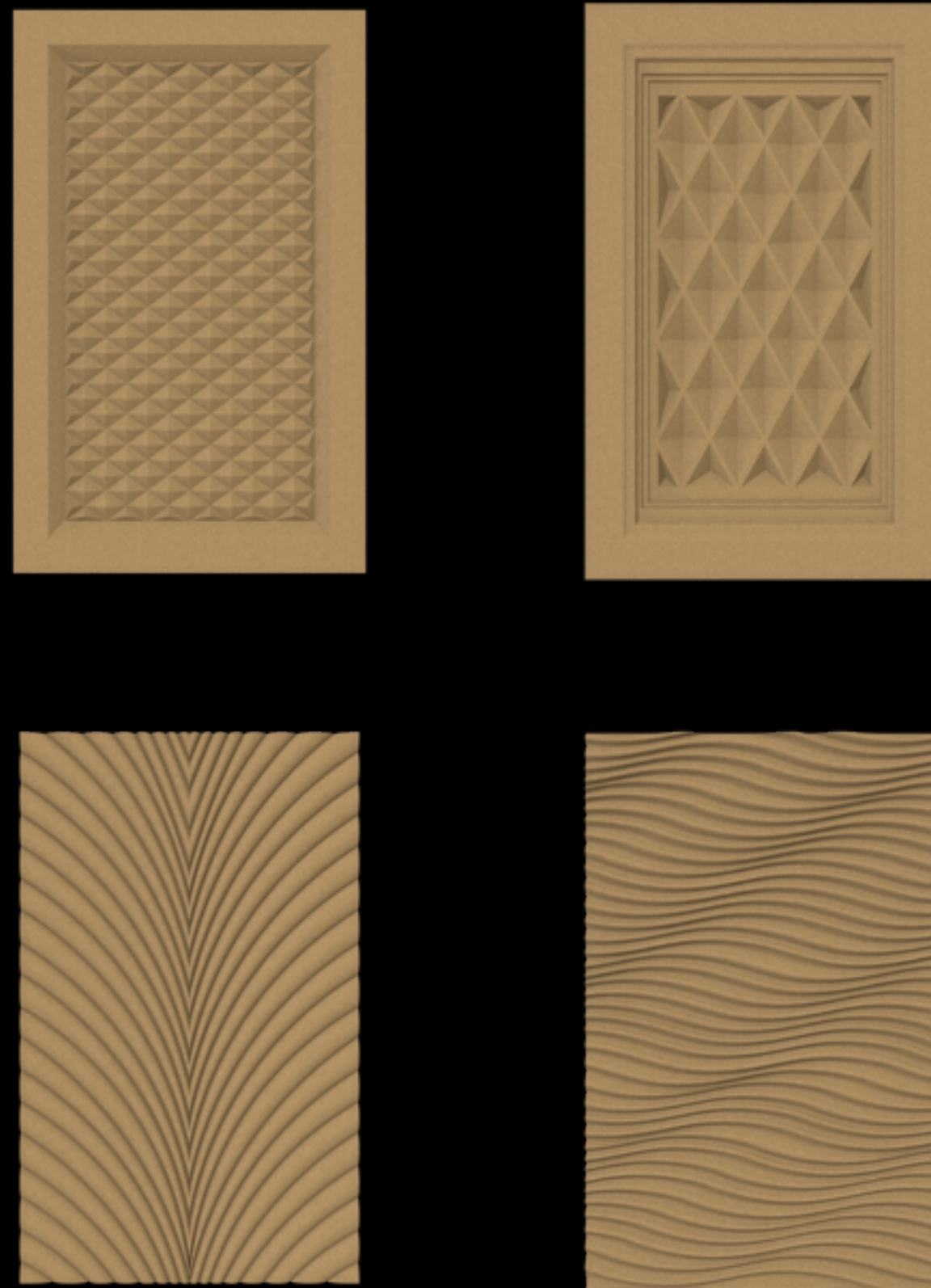


# Door Samples

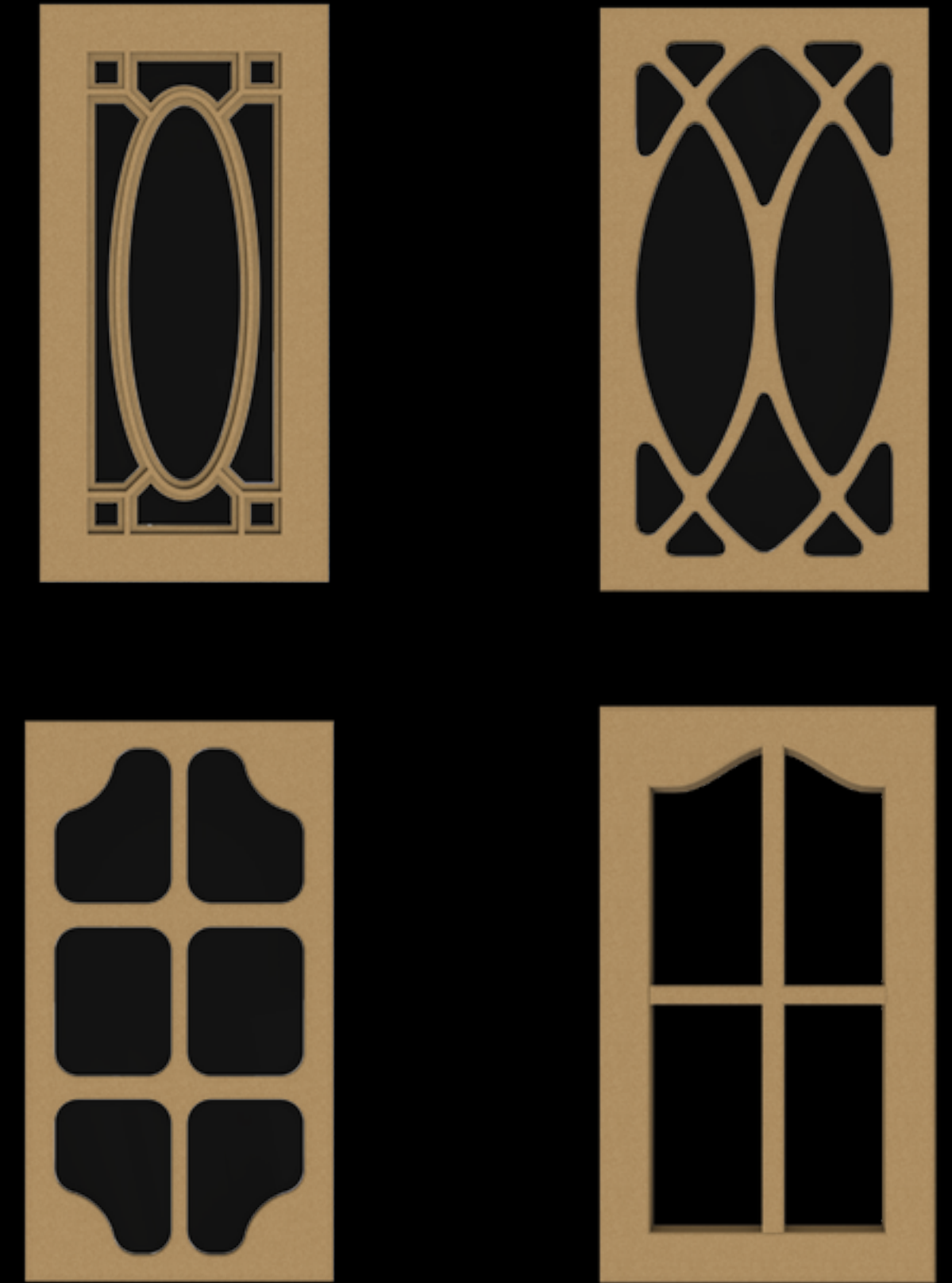
## Classic



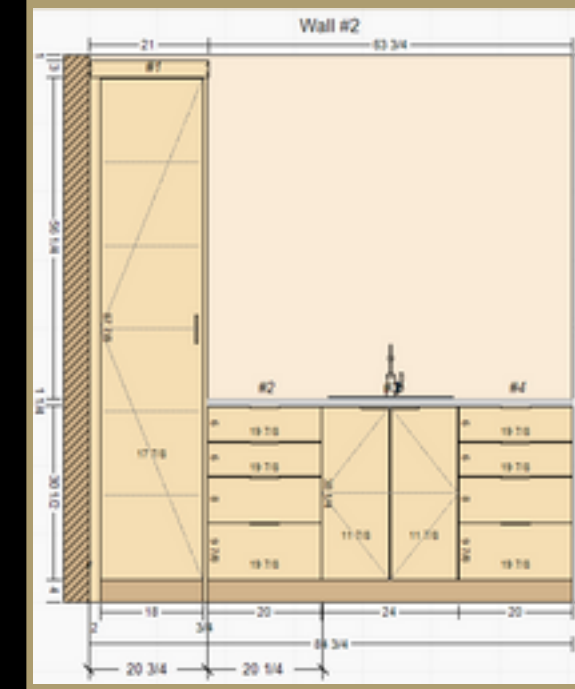
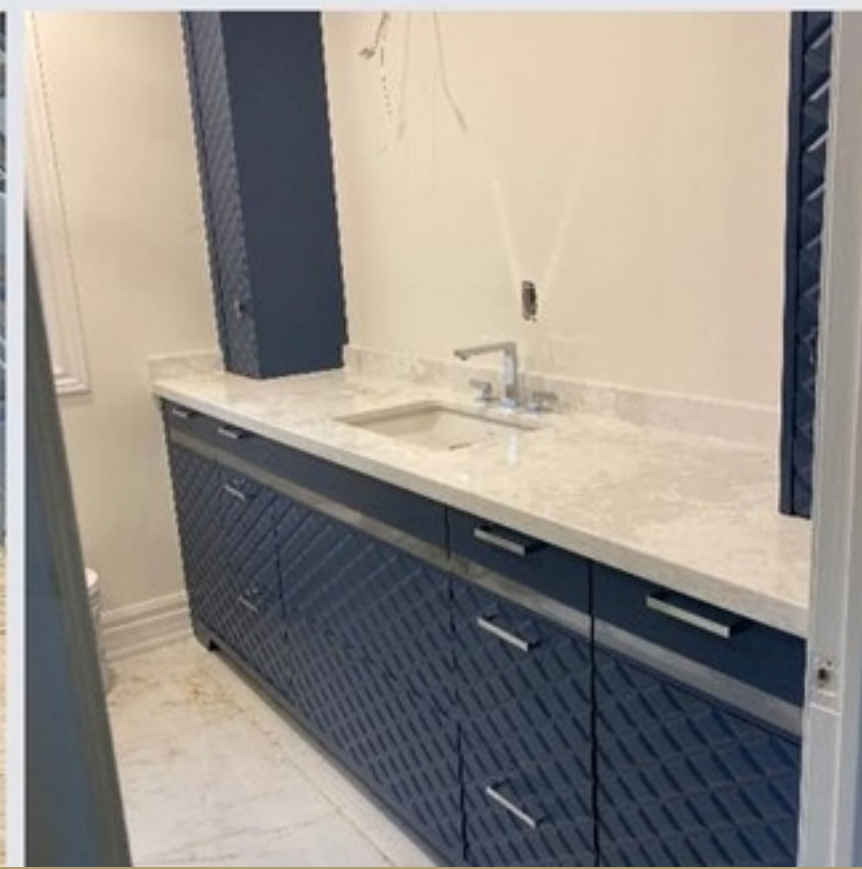
## Modern



## Glass



# Job Samples



# Modern Job Samples



- Protective scratch film
- Protective film
- Top layer
- Base (decor) layer
- Primer
- MDF
- Plain white foil

Surface:	Matt Lacquer Touch
Colours:	20
Pallet:	20 pcs
Size:	Width: 1220 mm   48.0 in Length: 2800 mm   110.2 in Thickness: 8 / 18 mm   0.3 / 0.7 in



# Classic

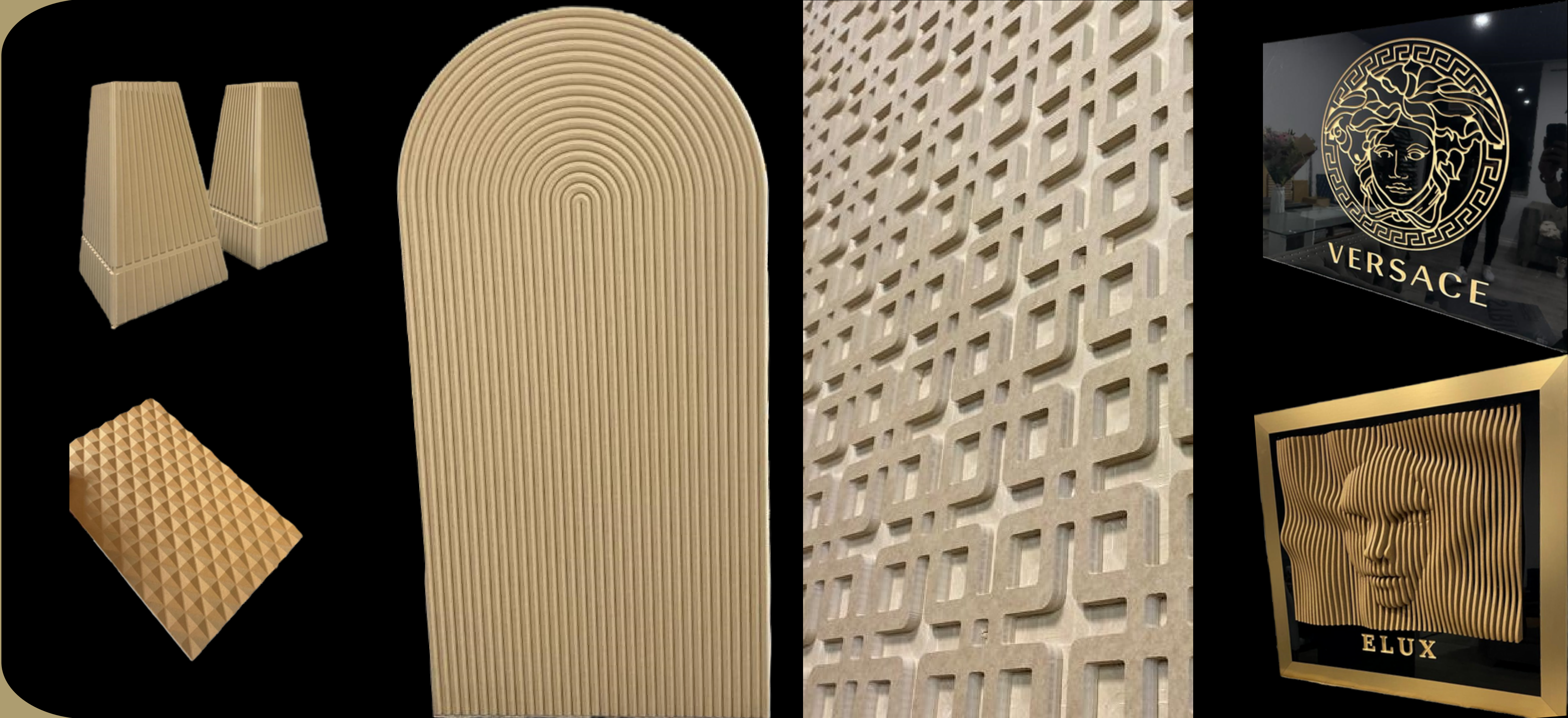


# Drawer Job Samples





# Commrercial Samples



# Commercial Jobs



# Designer

---



Welcome to Elham Taghavi, an esteemed interior designer specializing in the millwork industry. With a distinguished career spanning international borders, she has left an indelible mark on the design different spaces, showcasing expertise in Canada, Turkey, Oman, Qatar, Spain, France, and the UAE.

Known for the artful integration of custom millwork elements, she brings a global perspective to each project. Having worked across diverse cultural contexts, she understands the nuances of design preferences and seamlessly incorporates them into her creations. From the rich traditions of Turkey to the contemporary aesthetics of Canada, Elham draws inspiration from her international experiences, resulting in interiors that are not only visually stunning but also culturally resonant.

This seasoned designer's approach is characterized by a meticulous attention to detail and an unwavering commitment to quality. Collaborating closely with clients, she ensures that each bespoke millwork solution reflects the unique vision, lifestyle, and cultural influences of those who inhabit the space.

Explore a portfolio that transcends geographical boundaries, where the artistry of millwork converges with a global design sensibility. We invite you to experience a world of interior design where craftsmanship knows no borders, and every project tells a unique international story.